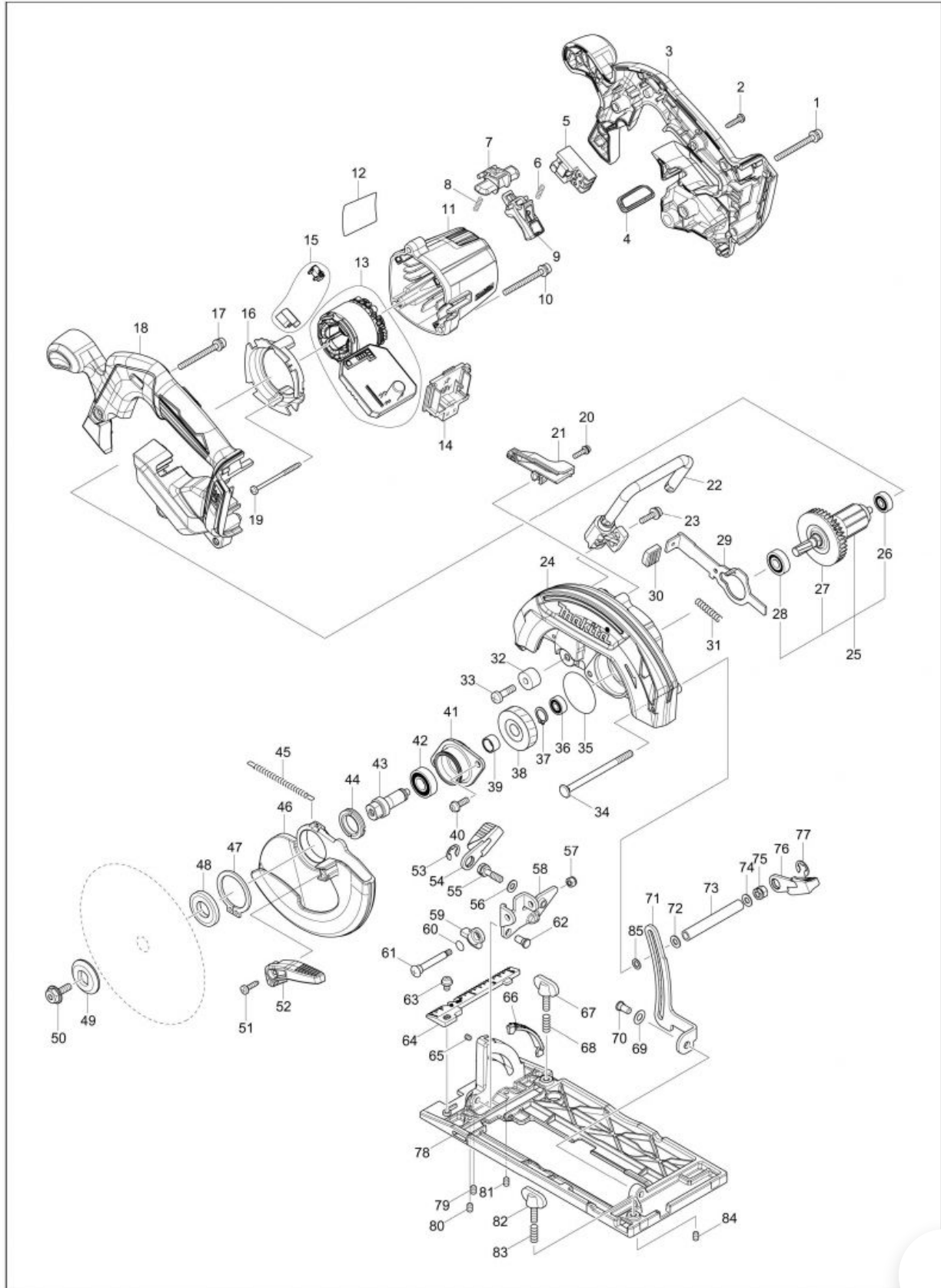


Part Diagram

(MY) DHS680 / 165MM CORDLESS CIRCULAR SAW



Item	Sub	Parts No.	Parts Description	Qty
001		911263-2	PAN HEAD SCREW M5X40	1
002		265995-6	TAPPING SCREW 4X18	7
003		183A15-9	HANDLE SET	1
	C10	263005-3	RUBBER PIN 6	2
	D10		INC. 18	
004		142948-1	INDICATION PLATE COMPLETE	1
005		650734-1	SWITCH TG73BDS-2	1
006		231469-9	COMPRESSION SPRING 4	1
007		419664-3	LOCK OFF LEVER	1
008		231469-9	COMPRESSION SPRING 4	1
009		455480-9	SWITCH LEVER	1
010		911263-2	PAN HEAD SCREW M5X40	3
011		455437-0	MOTOR HOUSING	1
012		850H69-0	DHS680 NAME PLATE	1
013		632D90-5	STATOR UNIT	1
013-1		629348-7	STATOR UNIT	1
013-2		629B61-9	STATOR	1
014		644808-8	TERMINAL	1
015		632D81-6	SWITCH UNIT	1
016		455440-1	BAFFLE PLATE	1
017		911263-2	PAN HEAD SCREW M5X40	1
018		183A15-9	HANDLE SET	1
	C10	263005-3	RUBBER PIN 6	2
	D10		INC. 3	
019		266091-3	TAPPING SCREW 4X50	2
020		911128-8	P.H.SCREW M4X16 WITH WR	1
021		455483-3	DUCT	1
022		123269-0	HOOK ASSEMBLY	1
023		911233-1	PAN HEAD SCREW M5X20	2
024A		142942-3	BLADE CASE COMPLETE	1
	C10	213953-6	O RING 24	1
024C		142942-3	BLADE CASE COMPLETE	1
	C10	213953-6	O RING 24	1
024-1A		143256-3	BLADE CASE COMPLETE	1
	C10	213953-6	O RING 24	1
024-1C		143256-3	BLADE CASE COMPLETE	1
	C10	213953-6	O RING 24	1
024-1D		143256-3	BLADE CASE COMPLETE	1
	C10	213953-6	O RING 24	1
025		519359-9	ROTOR ASS'Y	1
	D10		INC. 26-28	
025-1		519359-9	ROTOR ASS'Y	1
	D10		INC. 26-28	
026		210022-4	BALL BEARING 626DDW	1
027		240045-8	FAN 55	1
028		210051-7	BALL BEARING 609LLB	1
029		346837-4	SHAFT LOCK	1
030		286275-7	CAP	1
031		233117-6	COMPRESSION SPRING 6	1
032		262552-1	RUBBER SLEEVE 6	1
033		251247-1	+ PAN HEAD SCREW M6X20	1
034		266194-3	FLAT HEAD SCREW M6X90	1
035		213565-5	O RING 42	1
036		210028-2	BALL BEARING 606ZZ	1
036-1		210137-7	BALL BEARING 606ZZ	1
037		961052-5	RETAINING RING (EXT) S-12	1
038		227794-4	HELICAL GEAR 50	1
039		257349-1	SLEEVE 12	1

Item	Sub	Parts No.	Parts Description	Qty
040		911223-4	PAN HEAD SCREW M5X16	2
041		319212-7	BEARING BOX	1
042		211131-2	BALL BEARING 6001DDW	1
043		326459-6	SPINDLE	1
044		285845-9	BEARING RETAINER 19-29	1
045		231878-2	TENSION SPRING 4	1
046		319211-9	SAFETY COVER	1
047		961152-1	RETAINING RING (EXT) S-34	1
048		224473-5	INNER FLANGE 35	1
048-1		224593-5	INNER FLANGE 35	1
049		224409-4	OUTER FLANGE 35	1
050		266924-2	HEX. SOCKET HEX. BOLT M6X18	1
051		266034-5	TAPPING SCREW CT 4X16	1
052		272282-6	LEVER 60	1
053		257982-9	BOW STOP RING E-8	1
054		272272-9	LEVER 45	1
055		266735-5	HEX.BOLT M6X20	1
055-1		265B21-3	HEX.BOLT M6X20	1
056		941151-9	FLAT WASHER 6	1
057		252103-8	HEX. LOCK NUT M5-8	1
058		346836-6	ANGULAR GUIDE	1
059		317986-4	STOPPER	1
060		213062-1	O RING 9	1
061		265084-7	+ TRUSS HEAD SCREW M5	1
062		256480-0	SHOULDER PIN 6-7	1
063A		911203-0	PAN HEAD SCREW M5X8	1
063C		911203-0	PAN HEAD SCREW M5X8	1
063-1A		911208-0	PAN HEAD SCREW M5X10	1
063-1C		911208-0	PAN HEAD SCREW M5X10	1
063-1D		911208-0	PAN HEAD SCREW M5X10	1
064		455516-4	TOP GUIDE	1
065		266318-1	H.S.SET SCREW(FLAT POINT)M4X6	2
066		455517-2	BEVEL GUIDE	1
067		251896-4	SCREW M5X20	1
068		231007-7	COMPRESSION SPRING 6	1
069		253058-0	FLAT WASHER 7	1
070		256511-5	SHOULDER PIN 6-7	1
071		346838-2	DEPTH GUIDE	1
072		941151-9	FLAT WASHER 6	1
073		332126-3	PIPE 6	1
074		941151-9	FLAT WASHER 6	1
075		264103-6	HEX. NUT M6	1
076		272272-9	LEVER 45	1
077		257982-9	BOW STOP RING E-8	1
078		319210-1	BASE	1
078-1		312B04-5	BASE	1
079		266436-5	H.S.SET SCREW(FLAT POINT)M5X8	1
080		266436-5	H.S.SET SCREW(FLAT POINT)M5X8	1
081		266436-5	H.S.SET SCREW(FLAT POINT)M5X8	1
082		251896-4	SCREW M5X20	1
083		231007-7	COMPRESSION SPRING 6	1
084		266436-5	H.S.SET SCREW(FLAT POINT)M5X8	1
085		253077-6	FLAT WASHER 6	1
086		620K93-3	CONTROLLER	1
087		652119-7	PAN HEAD SCREW M2X6	6
A01		783203-8	HEX. WRENCH 5	
A02		A-85101	T.C.T.SAW BLADE 165X24TX20	
A02-1		B-63018	TCT BLADE 165X25T WOOD EFFICUT	
A03		164095-8	GUIDE RULE	1

Item	Sub	Parts No.	Parts Description	Qty
A04C		***DC18RC	DC18RC FAST CHARGER	1
A04D		***DC18RC	DC18RC FAST CHARGER	1
A05C		194204-5	BATTERY BL1830 SET	2
A05-1C		194204-5	BATTERY BL1830 SET	2
A05-1D		196399-0	BATTERY BL1840 SET	2
A05-2C		197600-6	BATTERY BL1830B SET	2
A05-2D		197265-4	BATTERY BL1840B SET	2
A05-3C		197600-6	BATTERY BL1830B SET	2
A05-3D		197265-4	BATTERY BL1840B SET	2
A06C		450128-8	BATTERY COVER	1
A06D		450128-8	BATTERY COVER	1
A07C		821551-8	CONNECTOR PLASTIC CASE (TYPE3)	1
	C10	453974-8	LATCH	4
A07D		821551-8	CONNECTOR PLASTIC CASE (TYPE3)	1
	C10	453974-8	LATCH	4
A08C		838182-6	INNER TRAY	1
A08D		838182-6	INNER TRAY	1
A09C		805V72-0	DHS680RFJ INDICATION LABEL	1
A09D		805V45-3	DHS680RMJ INDICATION LABEL	1
A10C		805V74-6	DHS680RFJ PLASTIC CASE LABEL	2
A10D		805V46-1	DHS680RMJ PLASTIC CASE LABEL	2
A10-1C		806G48-0	DHS680RFJ PLASTIC CASE LABEL	2
A10-1D		805V77-0	DHS680RMJ PLASTIC CASE LABEL	2